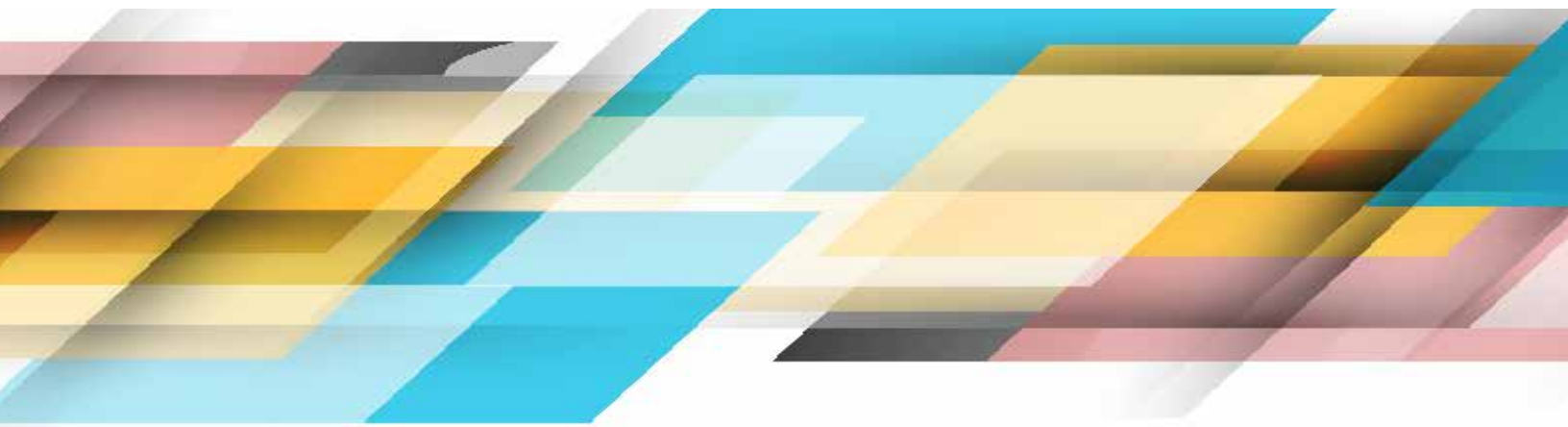


Annual Report

2022



Let Us Grow Together!



Foundation Mission

The IIMC Foundation is a diverse team of volunteers who are passionately committed to raising endowed dollars whose earnings help IIMC pursue its educational objectives.

BOARD OF DIRECTORS



President

Mary Lynne Stratta, MMC
Bryan, TX



Vice President

Buster Brown, CMC
Omaha, NE



Secretary

Colleen Nicol, MMC
Riverside, CA



Treasurer

Vincent Buttiglieri, MMC
Ocean Township, NJ



Dawn Abrahamson, MMC
Vallejo CA



Tala Baltazar
Long Beach, CA



Donny Barstow
Tallahassee, FL



Ray Bollhauer
Cincinnati, OH



James Bonneville
Stillwater, MN



Sharon Cassler, MMC
Cambridge, OH



Tracy Davis MMC
Salem, OR



Kathryn Dornan
Byron Center, MI



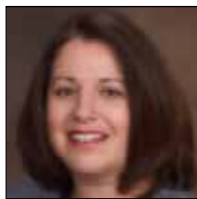
Lisa Garcia, MMC
Florence, AZ



Eelco Groenenboom
Zuid-Beijerland,
The Netherlands



Mary Ann Hess, MMC
Laurel, MS



Cristina LoVerde
Rochester, NY



Shari Moore, MMC
St. Paul, MN



Roxanne Schneider,
MMC
Dysart, IA



Beatrice Rodriguez, Ed.D
IIMC Director
Professional Development
Rancho Cucamonga, CA



Chris G. Shalby
IIMC Executive Director
Rancho Cucamonga, CA

Business Council



Dale Barstow
Tallahassee, FL



Beverly Hammerstrom
Temperance, MI



Stephen Wolf
Cincinnati, OH



Kirk Franklin
Lubbock, TX



Report from the President

Mary Lynne Stratta, MMC
IIMC Foundation President

Dear IIMC Foundation Supporters and IIMC Members:
The IIMC Foundation was created in 1984 by a forward-thinking group of Municipal Clerks who saw a need for funds for Clerk education. The Foundation is a 501C3 non-profit organization that raises endowed dollars whose earnings are resources for IIMC and its members to pursue educational opportunities. That purpose remains the sole focus of the Foundation.

2022 Income, Expenses and Contributions

As of December 31, 2022, the IIMC Foundation has contributed \$1,311,098.29 to IIMC for educational programs, CMC/MMC scholarships, online learning scholarships, Region educational stipends, conference grants and other educational opportunities.

The Foundation's corpus as of December 31, 2022, was \$3,311,616.32. Of that amount, \$2,371,814.15 was in unrestricted funds, and \$939,802.17 was in restricted funds. The Foundation realized \$161,296.40 in total revenue in 2022. Those revenues came from member donations, voluntary contributions, society donations, sponsorships, the annual conference silent auction, the Hawaii fundraiser, conference registration fundraiser, t-shirt sales, memorial gifts, etc. Restricted endowments increased in 2022 with individual donations and the creation of the Washington Municipal Clerks Association, Arizona Municipal Clerks Association and Mr. Tom Spengler endowed scholarships.

2022 Income

Voluntary contributions from IIMC members	\$55,236.00
Sponsorships from IIMC	\$8,707.70
Society Donations	\$7,858.00
Silent Auction	\$12,126.01
Endowments	\$46,740.00
Memorials and Tributes	\$4,980.00

Miscellaneous Fundraisers (Hawaii trip, conference registration, 50-50 split, bracelet sales)	\$12,697.00
Education Funds from IIMC	\$4,298.00
Conference T-shirts	\$1,358.34
Exhibit Hall Royalties	\$2,500.00
Other	\$4,795.35

2022 Expenses

The Foundation incurs professional fees including investment, legal and accounting services. Board members donated their travel costs in 2022. The Foundation received a clean, unqualified external audit for the 2021 fiscal year.

2022 Operating Expenses

Professional Fees (audit, accounting, legal, financial services)	\$22,028.16
Supplies/Printing/Postage	\$1,926.90
Board Travel	\$0
Total Operating Expenses	\$23,955.06

2022 Foundation Contributions to IIMC and Members for Clerk Education

Education Funds to IIMC	\$30,700.00
Restricted CMC and MMC Scholarships	\$13,088.00
Unrestricted CMC and MMC Scholarships	\$5,510.00
Online learning scholarships	\$5,192.50

As far back as 2010, the Foundation has funded all qualified CMC, MMC and online learning scholarship applications, as well as region educational stipend requests, received annually. Please apply for financial assistance and encourage your fellow Clerks and regions to take advantage of these education dollars.

Continued on page 4



Endowed Funds

Year End 2021 Unrestricted	\$2,776,440.92
Year End 2021 Restricted	\$974,574.47
Year End 2021 Total Value.....	\$3,751,015.39
Year End 2022 Unrestricted	\$2,371,814.15
Year End 2022 Restricted	\$939,802.17
Year End 2022 Total Value.....	\$3,311,616.32

The corpus, or this \$3.3 million, is never touched. It remains invested to make more money. The interest earned on the corpus is what is used to fund the Foundation’s support of IIMC and its members’ educational needs. So, the larger the corpus, the more the Foundation can give to IIMC and its members for education. If you give a dollar, that dollar is never touched, only the interest earned is disbursed. That is how foundations work, and that is why even though it sounds like the Foundation has a lot of money invested, that corpus is never touched. It remains untouched so that we can fund clerk education in perpetuity. So, we must build the corpus to earn money. How do we build the corpus? Only with your support. Please give.

The Foundation suffered, as we all did with our individual retirement accounts, from the record high inflation and near-recession economy in 2022. The Foundation Board maintained close contact with our financial advisors and below will share their comments and advice regarding the Foundation’s asset investments and policies regarding distribution of funds.

Disbursement of Funds

Throughout 2022, the Foundation Finance Committee and Board sought input and guidance from our certified financial planners with Morgan Stanley Graystone Financial Consultants about the Foundation’s distribution of earnings for clerk education. These financial consultants are well educated individuals, holding multiple degrees and certifications in financial management and planning. They are financial advisors to a number of foundations. They are well versed in assisting foundations in managing assets, and the Finance Committee and Board expressed complete confidence in them regarding their guidance to the Foundation.

IIMC Foundation Policy 8 and Policy 10 dictate how earnings on invested dollars are distributed for clerk education. Policy 8 utilizes earnings from unrestricted

funds. Policy 10 utilizes earnings on restricted funds. The formula contained in policy and in use is one strongly recommended by our financial advisors. It states that up to seven percent of the unrestricted or restricted investments based on a three-year average, shall be subject to expenditure each year after the three-year inflation rate has been deducted. Here are the steps used in calculating disbursement of funds to IIMC for educational program, scholarships, grants, etc.

1. Determine total unrestricted or restricted investments as of June 30 or September 30, respectively, for the last three years. Divide the total of the past three-year investments by 3 to determine the average investment amount. For restricted funds, this applies to those funds with a basis of \$5,000.
2. Take the past three-year inflation rates for each of those years. Divide the total of the past three-year inflation rates by 3 to determine the average inflation rate.
3. Determine the amount of the unrestricted or restricted investments that shall be subject to expenditure by multiplying the average investment amounts by up to 7 percent.
4. Determine the amount of inflation to deduct from the possible expenditures by multiplying the average investment by the three-year inflation rate.
5. Determine the final possible expenditure by subtracting the inflation amount from the unrestricted or restricted investments that shall be subject to expenditure.

Our financial advisors and independent auditors always confirm that the Foundation Board has correctly calculated the disbursements of funds under these formulas set out in policy.

In 2022, based on the highest inflation rate in our country’s history, at least since WWII, and a very poor performing economy, the Foundation Board still voted to give more for Clerk education than actual interest earnings this year – 6.25 percent from unrestricted and 7 percent from restricted.

Relative to the Foundation’s policies regarding the formula to determine the amount of interest earned to distribute each year, our financial advisors shared the following comments:



Mary Lynne Stratta, MMC

Continued from page 4



- Seven percent distribution rate is very high and generous for a foundation like the IIMC Foundation. Three-four percent distribution rate is common for foundations. Seven percent applied consistently is too heavy to maintain corpus integrity over time. The financial advisors would not recommend raising it any higher. If anything, they would recommend lowering it, but since the Foundation Board applies the formula very well using inflation over a three-year period, and since there is a strong policy of protecting corpus integrity, they feel the Foundation is solid in its policy application.
- The financial advisors confirmed the Board is following policy and applying the policy formula correctly.
- Most foundations average four percent distribution year over year. A yearly analysis of university/college foundations show the average is 4 to 4.5 percent per year. Three percent is considered conservative.
- Inflation is typically calculated on a 3-5-year basis. The IIMC Foundation uses a 3-year basis. The financial advisors said a 3-year basis was the most widely used by foundations. The financial advisors said this application of inflation over time has a “smoothing” effect on distributions.
- The IIMC Foundation does not have a “spend down” policy that requires a certain minimum amount of distribution per year over and above formula (policy) distribution. The financial advisors would not recommend this.
- The financial advisors advised the Board must consider anticipated long term returns while maintaining the corpus integrity.
- The financial advisors said that “old school” foundation policy was to spend the income, when interest rates were very high. As interest rates have come down, foundations found a better way to manage assets, embracing using an average spending formula, which is exactly what the IIMC Foundation does.
- The financial advisors believe the Foundation Board’s number one job is to protect the corpus integrity. They advised everything relative to a foundation has to be looked at in perpetuity.
- The financial advisors feel the Foundation Board is doing the right thing with its current Policy 8 and Policy 10 distribution formulas.

After a lengthy discussion, the Finance Committee and Board agreed that they could not recommend a change to the current policies and formula for distribution of funds, since seven percent is considered very generous relative to foundation operations. Certainly, a formula that takes inflation into account is very suitable for the unstable financial times we as a country are experiencing. In keeping with advice from our professional financial advisors, the Board agreed the policies will remain the same.

We have also stayed in contact with our financial advisors about banking failures and any potential risk to the Foundation’s assets. The Foundation maintains only a small checking account in a bank. The rest of the Foundation’s assets are invested with Morgan Stanley. Per our financial advisors, the Foundation’s unrestricted and restricted accounts are defensively positioned with the fixed income allocation being approximately 3 percent overweight versus the target weights. This positioning is aligned with their firm’s outlook for more potential volatility in the equity markets over the next several months. Morgan Stanley Graystone Consulting will continue to monitor the financial climate and make any recommended changes to our client portfolio. At this time, they intend to keep the defensive positioning in place.

Over all, again, the bigger the corpus, the more earnings and the more money we can give for clerk education and scholarships. That’s why the Foundation Board raises money all year. That’s why the Board and Foundation volunteers work so hard. Every cent raised goes to fund Clerk education.

Awards

The following were the recipients of IIMC Foundation awards in 2022 for their continued support of the Foundation. They were recognized at the annual conference in Little Rock and are again thanked for their support of the Foundation:

Hall of Honor – Past Foundation Board Members **Steve Wolf and Beverly Hammerstrom**

Individual Award – **Brenda K. Young**

Individual Step Up Award – **Caroline de Llamas**

Association Award – **Nebraska Municipal Clerks Assoc.**

Association Step Up Award – **Alaska Municipal Clerks Association**

Corporate Award – **General Code**

Continued on page 7

Endowed Education Funds and Scholarships

- ◆ American Legal Publishing Corporation Education Fund
- ◆ Anne Uecker Education Fund
- ◆ Arizona Municipal Clerks Association
- ◆ Barstow Family Education Fund
- ◆ Business Records Corporation Education Fund
- ◆ Charles & Stephanie Kelly Endowment Fund
- ◆ California City Clerks Education Fund
- ◆ Charlie Buttiglieri Education Fund
- ◆ Chris & Patrick Wilder Education Fund
- ◆ City Clerks of California Scholarship Fund II (CA Clerks only)
- ◆ Coded Systems Education Fund
- ◆ Donna Young Scholarship Fund
- ◆ Dyanne Reese Education Fund
- ◆ Elizabeth Kiss Education Fund
- ◆ Fleming Bell Education Fund
- ◆ General Code Publishing Education Fund
- ◆ Granicus Education Fund
- ◆ iCompass Education Fund
- ◆ James B. Tinnin Education Fund
- ◆ Laserfiche (Institute Directors Colloquium)
- ◆ Lyall Schwarzkopf Education Fund
- ◆ Marianne Edwards Education Fund
- ◆ Mary Johnston Education Endowment (Ohio Clerks only)
- ◆ Mary Kayser Education Fund
- ◆ Mary Lynne Stratta Education Fund
- ◆ Microvote, Inc. Education Fund
- ◆ Monica Martinez Simmons Leadership Scholarship
- ◆ Municipal Clerks Assoc of New Jersey Endowment Fund
- ◆ Municipal Code Corporation Education Fund
- ◆ Nebraska Education Fund
- ◆ New Mexico Municipal Clerks Education Fund (NM Clerks only)
- ◆ Norma Rodriguez Education Fund
- ◆ OMAR Education Fund
- ◆ Region IV Education Fund
- ◆ Reynolds Miel Education Fund
- ◆ Robert T. Thorpe Scholarship Fund
- ◆ Robert W. Pritchard Education Fund
- ◆ Tak & Helen Kawagoe Education Fund
- ◆ Tom Spengler Endowed Scholarship Fund
- ◆ Washington Municipal Clerks Association



IIMC FOUNDATION TRIBUTES/ HONOR YOUR MENTOR

The following is a list of donations made to the Foundation in recognition of the following individuals.

**Honor Your Mentor - Teresa K. Hudson
Katrina White**



Mary Lynne Stratta, MMC

Continued from page 5



This report also lists the names of donors who supported the Foundation in 2022. Thank you for your support of clerk education!

Looking Ahead

As we look to the future, we need all IIMC members’ support to channel as many educational dollars as possible to IIMC and its members. There are so many ways to help:

Honor a person or organization/association by creating a restricted endowment in their honor. To learn how, visit the Foundation’s website at www.iimcfoundation.com or speak to any Board member.

Make a memorial or honorary contribution in memory of a loved one or to honor a mentor.

Join the Helen Kawagoe Legacy Program and make a provision in your will to leave behind a gift that will fund clerk education for years to come or contact a Board member about joining the Legacy Program if you do not have a will.

If your city will not fund the \$25 voluntary contribution along with your IIMC dues, enclose a personal check for \$25. Or pay online and use a personal credit card for the \$25.

Make a society level donation or step up your donation to the next level and be a catalyst for clerk education going forward.

Go to the IIMC Foundation website and use “point and pay” to contribute. You can even sign up for a monthly contribution via credit card or bank draft.

Donate and bid on silent auction items. Buy tickets for the Hawaii trip, conference registration, and 50-50 raffles. Buy a Foundation t-shirt.

Join the Foundation Coffee Club – donate the cost of a coffee each month!

Giving has never been so easy – and the need for Clerk education dollars has never been greater! Join us in supporting education for IIMC members! Every dollar matters!

With Gratitude

The IIMC Foundation Board thanks everyone who supported the Foundation in 2022. We also thank the IIMC staff and Board for their continued support.

I personally want to thank the IIMC Foundation Board for the donation of your time, energy, money and travel expenses. You spend countless hours each year working on behalf of Clerk education. Thank you!

So, my fellow IIMC members, please join us in ensuring no municipal clerk misses much needed education due to a lack of resources. Give! Remember, when we all give a little, we all learn a lot.

Working for you,

Mary Lynne Stratta, MMC
IIMC Foundation President



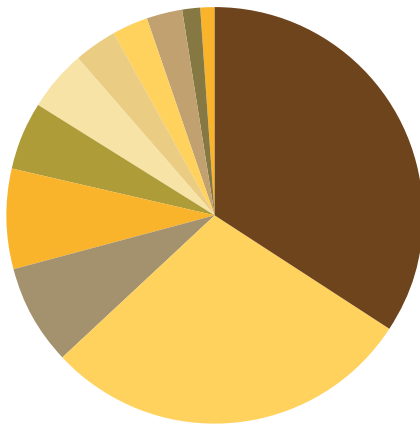
IIMC Foundation Board of Directors



Silent Auction

2022 Year End Charts

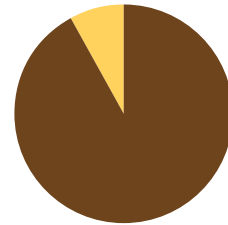
Income Total Income \$161,296.40



■ Voluntary contributions from IIMC members	\$55,236.00
■ Endowments	\$46,740.00
■ Miscellaneous Fundraisers (Hawaii trip, conference registration 50-50 split)	\$12,697.00
■ Silent Auction	\$12,126.01
■ Sponsorships from IIMC	\$8,707.70
■ Society Donations	\$7,858.00
■ Memorials and Tributes	\$4,980.00
■ Other	\$4,795.35
■ Education Funds from IIMC	\$4,298.00
■ Exhibit Hall Royalties	\$2,500.00
■ Conference T-shirts	\$1,358.34

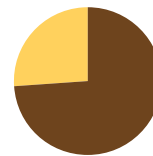
Operating Expenses Total Operating Expenses \$23,955.06

■ Professional Fees – (audit, accounting, legal, financial services)	\$22,028.16
■ Supplies/Printing/Postage	\$1,926.90
■ Board Travel	\$0.00
Total Operating Expenses	\$23,955.06

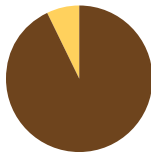


Endowment Funds

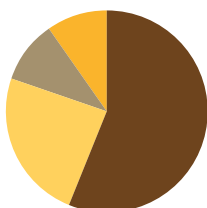
■ Year End 2021 Unrestricted	\$2,776,440.92
■ Year End 2021 Restricted	\$974,574.47
Year End Total Value 2021	\$3,751,015.39



■ Year End 2022 Unrestricted	\$2,371,814.15
■ Year End 2022 Restricted	\$939,802.17
Year End Total Value 2022	\$3,311,616.32



Foundation Contributions to IIMC and Members for Clerk Education



■ Education Funds to IIMC.....	\$30,700.00
■ Restricted CMC & MMC Scholarships.....	\$13,088.00
■ Unrestricted CMC & MMC Scholarships	\$5,510.00
■ Online Learning Scholarships.....	\$5,192.50

2022 FOUNDATION DONORS

Trailblazer (\$5,000+)

Spengler, Tom
The Portage Foundation
Washington Municipal Clerks
Wolf, Stephen

Visionary (\$2,500 - \$4,999)

Arizona Municipal Clerks Assn
Bonneville, James
Buttiglieri, Vincent
General Code
Johnston, Mary
Miel, Vicky
Nicol, Colleen
Schneider, Roxanne
Stratta, Mary Lynne
University of Nebraska at Omaha

Leader (\$500 - \$2,499)

Barstow, Dale
Barstow, Donny
Brown, Buster
Cassler, Sharon
Civic Plus
Davis, Tracy
De Llamas, Caroline
Diligent
Dornan, Kathryn
Escribe
Garcia, Lisa
Granicus
Hess, Mary Ann
Kopitke, Kittie
Mangen, Debra
Martinez Simmons, Monica
MCCi
McPherson, Lana
Moore, Shari
Mowad, Karen
Ohio Municipal Clerks Assn

Pitman, Camilla
Region VI (IA, MN,WI)
Rock Solid
Rodriguez, Norma
Schwarzkopf, Lyall
Shalby, Chris
Tokar, Charles
Township of Ocean

Change Maker (\$100 - \$499)

Arkansas City Clerks, Rec, Treas
Barnett, Tori
Blair, Dennis
Cirtin, Brenda
ClerkBase
Conley, Diana
Covert, Tracey
Dalton, Brandy
Daudt, Janis
Dominion Voting
Etzel, Audra
Fosselman, Diane
Hammerstrom, Bev
Heyeck, Michael
Hudson, Teresa
IIMC
Iowa MFO Assn
Jenkins, Larry
Joseph, Jessie
Kansas CCMFOA
Kayser, Mary
Kentucky Municipal Clerks
Laserfiche Document Imaging
LoVerde, Cristina
Maine Town & City Clerks Assn
Marshall, Angela
McFadden, Jeananne
Mississippi Clerks Assoc
Moe, Marie
Moore, Dolores
Nelson, Catherine
New Mexico Municipal League
Post, Ruth
Prasher, Mollie

Pritchard, Robert
Ragona, JoAnne
Reese, Dyanne
Rhude, Marita
Richburg, Angela
Ruch, Brian
Scoggins, Sherry
Smith, Donna
Smith, Pamela
Whitbey, Diane
Wilder, Christina
Young, Kathryn

Friend (\$25 - \$99)

Aaron, Tracey
Abba, Stephanie
Abeita, Alfred
Abel, Carla
Abrahamson, Dawn
Acker, Vicki
Ackerman, Lori
Adair, Elizabeth
Adams, Corey
Adams, Haley
Adams, Jaoilyn
Adams, Robin
Adamson, Teresa
Addy, LeAnne
Afuvai, Lindsay
Agfalvi, Kimberly
Agoranos, Karen
Aguilar, Sherry
Ainslie, Candace
Akande, Bola
Alarcon-Strong, Lily
Albright, Jenifer
Alcala, Abigail
Aldridge, Kim
Alegria, Diana
Alfred, Kervin
Alig, Julie
Allen Burt, Tracy
Allen, Angela
Allen, Jennifer



2022 FOUNDATION DONORS (CONTINUED)

Allen, Tricia	Back, Patricia	Baruth, Pamela	Bischoff, Tyra
Alley, Christina	Bacus, Teri	Basham, Lora	Bisconer, Lynette
Almaraz, Lluvia	Baeza, Carrie	Bass, Christine	Bishop, Crystal
Altman, Robin	Bailey, Reynaldo	Bates, Krista	Black, Christine
Alvarez, Heather	Bailey, Tina	Bates, LaToya	Black, Donna
Amador, Hope	Bainbridge, Christine	Batten, Kim	Black, Whitney
Ambrosius, Donna	Bains, Angila	Battista, Jennifer	Blackard, Barbara
Ames, Pauline	Baird, Ann	Baumann, Mary Kay	Blackmon, Dee
Amin, Tamara	Baker, Angie	Bay, Megan	Blessman, Pamela
Anderson, Belinda	Baker, April	Beachem, Patrice	Blevins, Sara
Anderson, Cindy	Baker, Denise	Beaman, Janice	Bliss, Sandi
Anderson, Daniel	Balderson, Cindy	Beasley, Belinda	Blome, Kimberly
Anderson, Janet	Baldwin, Katie	Beaudry, Jacqueline	Blot, Jamie
Anderson, Robert	Balicki, Kathleen	Bechtel, Reba	Blue, Kim
Anderson, Saralani	Ball, Shirley	Beck, Lynnette	Boan, Linda
Anderson, Stacey	Ballard, Deborah	Beck, Pamela	Bocchino, Ruth
Anderson-Warren, Denise	Ballou, Brenda	Beck, Rhonda	Bock, Frances
Andis, Mindy	Bane, Sally	Beczkiwicz, Lisa	Bodo, Tracey
Andrus, Ariel	Barajas, Mary Joy	Begin, Nicole	Boersma, H. Carolyn
Angel, John	Barcia, Mercedes	Behunin, Roxanne	Boersma, Maria
Anglemyer, Janet	Bargsley, Jessica	Bell, Susan	Bogan, Theresa
Anglim, Susan	Barhydt, Cynthia	Bembrick, Tammy	Bohn, Bethany
Applewhite, Amanda	Barker, Blair	Bender, June	Bojorquez, Heather
Archer, Claudia	Barker, Shellie	Bendian, Meredith	Bolder, Wynetta
Armstead, Jo Ann	Barkhimer, Theresa	Benevides, Edward	Boltshauser, Sandra
Armstead, Thomas	Barlow, Paula	Bennett, Amanda	Bombardo, Shelley
Arnold, Amy	Barnes, Emma	Bennett, Andria	Bond, Lorie
Arnold, Karen	Barnes, Jessica	Bennett, Cynthia	Bone, Susan
Arnold, Melisa	Barnes, Mazi	Bennett, Pamela	Boorman, Stephanie
Arocha, Missel	Barnett, Juanita	Bennett, Shalon	Boos, Sadie
Arocho, Ashton	Barnett, Karen	Benson, Kimberly	Boring, C. EmmaLee
Arpin, Lisa	Barnett, Paula	Bentley, Catherine	Borst, Stephanie
Arthurs, Robin	Barnwell, Kimberly	Benton, Ben	Botica, Renee
Astor, Debbie	Barr, Rosiland	Bentrud, Alix	Bourgeois, Linda
Atkinson, Alan	Barrett, Abrial	Berger, Brian	Boutwell, Lorrie
Aune, Rose	Barrett, Audra	Bergh, Lisa	Bowen, Cynthia
Austin, Keri-Ann	Barrett, Brian	Bernacki, Mark	Bowen, Shirley
Austin, Martha Jo	Barrett, Debra	Bertram, Janine	Bower, Mary
Avila, April	Barrett, Laurie	Best, Vickie	Bowers, Karrie
Avrit, Britt	Barrett-Forbes, Narva	Beutel, Emily	Bowman, Brandi
Ayala, Jonathan	Barrick, Barbara	Bibbens, Stephanie	Bowman, Cindy
Ayala, Maria	Barrington, Nickole	Bigney, Judy	Bowman, Patricia
Azama-Edwards, Gwen	Bartelt, Sydney	Bilka, Alexander	Bown, Laura
Baca, Denise	Barton, Laurie	Bilodeau, Kelly	Boyden, Nancy
Bach, Maureen	Bartz, Amanda	Bingham, Shantay	Boyer, Margaret

continued on page 11

2022 FOUNDATION DONORS (CONTINUED)

Boyer, Melissa	Buchholz, Mandy	Campos, Liana	Chestnutt, Joleatha
Bracamontes, June	Buhr, Lois	Capps, Melissa	Chittick, Marilyn
Brackeen-Kepley, Barbara	Bullen, Renee	Carle, Beverly	Christakes, Gabrielle
Brackett, Tanya	Bullock, Cassandra	Carlson, Beth	Christel, Julie
Bracy, Jennifer	Bullock, Tiffany	Carmack, Shannon	Christen, Marie
Bradley, Nick	Bunn, Vicki	Carmer, Tracy	Christensen, Gloria
Bradshaw, Skip	Bunting, Sarah	Caronongan, Pamela	Christensen, Jessica
Brancati, Edward	Burbage, Amanda	Carpenter, Patricia	Christoffers, Danny
Brandt, Holly	Burch, Lakisha	Carranco, Daniel	Chumley, Debra
Brededa, Roxanne	Burgess, Becky	Carr-Bruce, Michelle	Ciarleglio, Stephanie
Breland, Kim	Burk, Renee	Carroll, Lori	Cisneros, Ariana
Bremer, Cathy	Burke, Elizabeth	Carter, Deborah	Citarella, Winsome
Bretzger, Nancy	Burke, Lisa	Carter, Diane	Clark, Cathy
Brewster, Rebecca	Burke, Sheila	Carter, John	Clark, Janice
Brezinski, Elizabeth	Burkett, Shannon	Carter, Sarah	Clark, Jessica
Briney, Stacey	Burnham, Marie	Cartwright, Jessica	Clark, Jodi
Brock, Laura	Burns, Laurie	Casas, Karina	Clark, Kimberlie
Broge, Catherine	Burns, Megan	Case, Kathleen	Clark, Melanie
Brooks, Barbara	Burress, Mariea	Cash, Krysta	Clark, Phyllis
Brooks, Mary	Burroughes, Claire	Cash, Mandy	Clark, Sharon
Brooks, Vicky	Burton, Carla	Casper, Narice	Clark, Susan
Brothman, Beth	Burton, Craig	Cassell, Laurie	Clark, Toni
Brower, Annette	Burton, Melissa	Cassidy-Hatchet, Laura	Clark-Baskin, Kimberly
Brown, Anna	Busey, Chrystal	Cassity, Lisa	Clausen, Lee Ann
Brown, Anne	Bush, Bonnie	Castillo, Sieanna	Clayton, Brandi
Brown, Betty	Bussart, Ashley	Casto, Roxanne	Cleveland, Kimberly
Brown, Cassie	Bussinger, Misty	Catanese, Emmett	Clewis, Cheryl
Brown, Chenay	Bustamante, Angela	Cathcart, Kathleen	Clifton, Julie
Brown, Cynthia	Buster, Jamie	Cavness Bradshaw, Christy	Cochran, Derene
Brown, Florene	Butler, Rosalia	Cazier, Virginia	Codjoe, Doneshia
Brown, Krista	Butters, Jane	Cenicola, Katherine	Coelho, Julie
Brown, Marcy	Buzzard, Karen	Centers, Laura	Coffin, Jenny
Brown, Mary	Byrd, Kimberly	Cervantes, Ruby	Cogdill, Michele
Brown, Sandy	Cabrera, Christina	Cervino, Linda	Cohen, Rebecca
Brown, Susan	Cabrera, Lisa Dawn	Chacker, Pattii	Colander, Richard
Brown, Tamara	Cahill, Laura	Chamberlain-Berman,	Coleman, Beverly
Browne, Elizabeth	Calderone, Becky	Carole	Coleman, Pamela
Bruce, Rita	Caldwell, Carolyn	Chambers, Melissa	Collins, Dawn
Brummond, Nikki	Caldwell, Kelley	Chang, Alba	Collins, Lori
Brunckhorst, Aimee	Calhoun, Marilee	Chapel, Shelley	Collins, Maree
Brunt, Heidi	Call, Sarah	Chaplin, Dawn	Collins, Melanie
Bryan, Shannon	Camacho, Laura	Chapman, Verna	Collins, Nancy
Bryant, Amanda	Camarena, Liana	Chasteen, Patti	Colombo, Lucie
Bublitz, Dawn	Campbell, Jill	Chavez Mata, Julissa	Combest, Ruth
Buchanan, Shelley	Campfield, Lynn	Cheever, Kellie	Compton, Sherry

continued on page 12



2022 FOUNDATION DONORS (CONTINUED)

Conde, Stephanie	Cunningham, Wilene	DeVaney, Lorie	Dunkerton, Jeffrey
Condit, Cathy	Cure, Sherry	Devine, Irma	Dunlap, April
Cone, Mary	Curling, Amada	Deviney, Jamie	Dunn, Janet
Conley, Kathleen	Curran, Sherry	Dewell, Marsha	Dunn, LaDonna
Conner, Cynthia	Curtis, Michelle	Dewey, Yvonne	Dunn, Sheandolen
Conner, Janett	Curtis, Tamela	Di Rado, Nicole	Dunton, Tuggy
Conrardy, Cynthia	Cusano, Tamara	Diaz, Laura	Dupuis, Pattie
Contreras, Griselda	Cusmir, Jennifer	DiBella, Jane	Dupuis, Sue
Conway, Trisha	Cutaia, David	Dickerson, Wendy	Duran, Kristina
Cook, Andrea	Cutler, Robert	Dickinson, Melanie	Durno, Brynn
Cook, Johnette	Czarnick, Jennifer	Diedtrich, Rita	Dutton, Dorothy
Cook, Lorrie	Da Silva, Lisa	Dillavou, Tammi	Dydek, Susan
Cook, Tameka	Dale, Jarod	Dillon, Rebecca	Dykens, Daniele
Cooley, Regina	Daly, Shannon	Dillon, Shelly	Dyrek, Carrie
Cooper Hapeman, Eva	Danello, Nancy	Dilts, Margaret	Dzuris, Patricia
Cooper, Janae	Dango, Flo-Ann	Dimopoulos, Susan	Eagley, Haley
Copley, Ann	Daniels, Carrie	Diridon, Rod	Earnshaw, Jessica
Cordeiro, Melissa	Darling, Kelly	Dixon, Annie	Eason, Christie
Corder, Alicia	Darnell, Sherri	Dixon, Tammy	Eaton, Robin
Corder, Mendy	Davidson, Dana	Doane, Lanette	Eaton, Roschell
Cordova, Lorena	Davis, Amanda	Dobratz, Jilline	Eddy, Michelle
Cornejo, Jeffrey Lawrence	Davis, Becky	Dobson, Suzanne	Edwards, Angela
Cornelio, Sergio	Davis, Brenda	Dodge, Melissa	Eggers, Melinda
Cornelio, Sonia	Davis, Heather	Dolentz, Jackie	Eisenmenger, Kayla
Corvin, Sharon	Davis, Karen	Doll, Kristy	Elbert, Kimberly
Coulbourne, Stephanie	Davis, Monica	Dominguez, Tyler	Elledge, Lisa
Cousino, JoAnne	Davolio, Jayne Marie	Donnelly, Susanne	Eller, Felicia
Cova, JoAnn	De Bee, John	Donson, Melonie	Ellersick, Becky
Covington, Rosalyn	De Goede, Maria	Doucet, Daniel	Ellis, Emily
Cox, Becka	De La Mora, Deborah	Dougherty, Cindy	Ellis, Kimberly
Crabtree, Dara	De La Torre, Maria	Douglas, Tara	Ellis, Susan
Craft, Kendra	De Leon-Herrera, Monica	Downey, Susan	Ellison, Cerena
Craig-Bragg, Ellen	De Los Santos, Bertha	Downs, Kristin	Elmore, Lori
Crary, Wendy	Deason, Kim	Doyle, Garland	Emerson, Aren
Craven, Stacy	Deaton, Lisa	Drago, Michelle	Endicott, Rebecca
Crispo, Nicole	DeBussy, Bethany	Drane, Mona	Engelhardt, Colleen
Criss, Louise	DeCastro Lawdanski, Lyla	Draney, Lauren	England, Debra
Criswell, Jane	Deford, Connie	Drumgoole, Nadine	Engle, Rachel
Cronce, Donna	DeLaFuente, Manuela	Drummond, Linda	Ennis, Deanne
Cross, Amy	Delaney, Erin	Duchi, Sandra	Enoch, DiAnne
Crump-Westergren, Carol	Delay, Kelly	Dueck, Marnie	Enterkin, Janise
Crumrine, Toni	Dempsey, Nancy	Dufour, Michelle	Epley, Madeleine
Cruz, Carolina	Denson-Garcia, Jennifer	Dunaway, Angela	Eredia, Catherine
Culp, Barbara	Desiderio, Christa	Dunbar, Lisa	Erickson, Tina
Cunningham, Crissy	Detterman, Patricia	Duncan, Tammela	Espinosa, Julie

continued on page 13

2022 FOUNDATION DONORS (CONTINUED)

Estes, Dawn	Flanery, Bill	Gabriel, Ingrid	Gipson, Rae
Estrella, Lupe	Flanery, Michelle	Gagnon, Rebecca	Giron, Alejandra
Etsell, Cathy	Fleischman, Whitney	Gaines, Cynthia	Gish, Malissa
Evans, Charlene	Fliss, Kristi	Gaines, Rebecca	Gitschlag, August
Evans, Janice	Flores, Dorothy	Gainey, Omichele	Givara, Cassie
Evans, Lauren	Flower, Courtney	Galbreath, Allison	Gladwell, Diane
Evans, Marion	Floyd, Tammy	Gallagher, Carrie	Glanz, Tracy
Even, LeAnn	Fonseca, Omara	Gallagher, Shellie	Gleason, Janet
Ewing, Jaseya	Fornof, Nanette	Gammon, Kimberly	Gleghorn, Jenny
Exum, Rachel	Forster, Nanci	Garcia, Christina	Glidden, Irma
Ezzell, Cynthia	Foster, Bonnie	Garcia, Claudia	Goffnett, Tammy Lynn
Falanka, Richard	Fountain, Debbie	Garcia, Francella	Golec, Robert
Fallin, Annette	Foust, Stan	Garcia, Jennifer	Goliber, Cindy
Falone, Katherine	Fouts, Kevin	Garcia, Rigoberto	Gomez, Carleen
Falowski, Amy	Fowler, Kalecia	Garcia-Lima, Cynthia	Gomez, Eileen
Fania, Lisa	Fowler, Karen	Gardner, Anylynne	Gonsalves, John
Farley, Jennifer	Fowler-Arcuri, Patricia	Gardner, Ginny	Gonzalez, Deana
Farley, Tammi	Fox, Michelle	Gardner, Stephanie	Gonzalez, Sonia
Farlow, Jennifer	Fox, William	Garland, Joy	Gordon, Sonia
Farmer, Kelly	Foy, Claire	Garofalo, Marc	Gore, Connie
Faust, Linda	Frank, Leslie	Garrett, Kandice	Gores, Loni
Fay, Naomi	Fraughton, Amanda	Garris, Martha	Gosser, Brenda
Fehr, Kayleen	Frawley, Karen	Gaston, Trina	Goudeau, Cynthia
Feibel, Teri	Frazier, June	Gates, Karen	Gourley, Mary
Felchle, Kelley	Frazier, Kelly	Gatewood, Katherine	Gover, Claudine
Ferguson, Linda	Frazier, Wendy	Gauthier, Susan	Grabicki, David
Ferguson, Robert	Freeman King, Vickie	Gay, Marica	Graham, Marlene
Fernandez, Alicia	Freeman, James	Gayle, Dana	Graham, Stephanie
Fernandez, Christina	Freeman, Miranda	Gayle-Gordon, Patricia	Grandison, Sheila
Fernandez, Maritza	Fresne, Julia	Geagel, Heidi	Gransee, Silvia
Ferriss, Julie	Friede, Julie	Geer-Duck, Shannon	Gray, Anna
Fette, Mark	Frink, Tory	Geffert, Adam	Gray, Candice
Fichter, Andrea	Frisch, Michelle	Gemme, Laura	Gray, Ceburn
Ficocelli, Jennifer	Fritzen, Elizabeth	Genievich, M. Elizabeth	Gray, Janet
Fields Numikoski, Danielle	Fronckowiak, Diana	George, Carolyn	Gray, Margaret
Fields, Marla	Frownfelder, Tom	George, Shelley	Green, Alice
Fierro, Ida	Fryman, Crystal	Gerhart, Stephen	Green, Jessica
Figgs, Nyota	Fude, Jane	Giercyk, Teri	Green, Judith
Finecy, Kim	Fulfer, Dennis	Gil, Edith	Green, Paige
Finke, Barbara	Fultz, Teresa	Gilbert, Deborah	Greene, Dawnne
Finkenbinder, Shawna	Furbee, Christina	Gilbert, Steve	Greene, Monica
Fisher, Malena	Furstenau, Cathy	Gillespie, Danielle	Greenwood, Ruthie
Fitch, Abby	Fusco, Agostino	Gillett, Suzanne	Greer, Angela
Fite, Rita	Fusco, Kiley	Gilley, Georgia	Gregoire Fedorjaczenko, Alexis
Fitzhenry, Diane	Gabel, Wanda	Gilliam, Thelma	



2022 FOUNDATION DONORS (CONTINUED)

Gregor, Chelsea	Hancock, Sara	Heney, Sandra	Hollingsworth, Lori
Gregory Woliver, Sarah	Hanebrink, Traci	Hennessy Neves, Amy	Honeyeutt, Deborah
Griffey, Apton	Hanks, Jessie	Hennigan, LaVette	Hoobler, Lynn
Griffin, Sherri	Hanna, Joanie	Henning, Nicole	Hooker, Keith
Griffin, Teresa	Hanna, Kim	Henry, Kimberly	Hooks, Terronda
Grigg, Lindsey	Hannemann, Christine	Henry, Teresa	Hopfinger, Kim
Grimm, Tara	Harada, Jelena	Hensley, Martha Mae	Hopkins, Dana
Grinstead, Samantha	Hardin, Elizabeth	Hensley, Stephanie	Hornberger, Crystal
Groenenboom, Eelco	Harding, Ronni	Henson, Wendy	Horner, Sasha
Groenendaal, Patricia Jo	Hargrove, Kristina	Heppner, Meghan	Horton, Lisa
Gross, Denise	Hargrove, Lindsey	Herman, Amy	Householder, Elizabeth
Gross, Tiffini	Harker, Kathleen	Hernandez, Beth	Housley, Sean
Grossman, Izetta	Harmon, Nicole	Hernandez, Cynthia	Howard, Jennifer
Groulx, Leslie	Harms, Jessica	Hernandez, Kim	Howard, Megan
Gruber, Anna	Harrington, Heather	Hernandez, Rosalba	Howke, Michelle
Guiler, Albert	Harris, Angela	Herre, Dominique	Hrasky, Ronda
Guillen, Kimberly	Harris, Angela	Herren, Judi	Hubbard, Lori
Guillotte, Deborah	Harris, Cynthia	Herrington, Evelyn	Huber, Gay
Gurley, Alvin	Harris, Deborah Jean	Herron, Susan	Huck, Doretta
Gurule, Darcy	Harris, Kevin	Hess, Deborah Kay	Hudman, Sheila
Guth, Danyel	Harris, Rayna	Hessman, April	Hudson, Betty
Gutierrez, Rosie	Hart, Christina	Hewett, Nicole	Hudson, Deletra
Gutierrez-Robles, Julie	Hart, Josie	Hicks, Michelle	Huéramo, RoseMary
Guy, Danielle	Hart, Kathleen	Higaki, Wanda	Huffman, Katelyn
Guzman, Reanna	Hart, Lesley	Hildebrand, Lindsay	Huggins, Shelly
Haacke, Melissa	Harthun, Danielle	Hildreth, Helena	Hughes, Betty
Haag, Susan	Hartin, Brooke	Hill, Melissa	Hughes, Edana
Habr, Danielle	Hartson, Tiffany	Hillegeist, Heather	Hughes, Janice
Haddad-Tamer, Jackie	Harvey, Elvia	Hillson, Brianne	Hull, Angela
Hadfield, Crystal	Harvilla, Crystal	Hilton, Rita	Hundt, Ellen
Hagan, Shelby	Hathaway, Ann	Hind, Gretchen	Huninghake, Janel
Hager, Pamela	Haug, Stephanie	Hinojosa, June	Hunt, Melissa
Haigler, Nicole	Hawkins, Alicia	Hiott, Susan	Hunt, Tamkia
Hala, Rachel	Hawkins, Sherletta	Hipona, Annette	Hunter, Arkamia
Hale, Valerie	Hawkins-McGruder, LaKasha	Hodge, Katherine	Hurley, Kristin
Halewicz, Kelley	Hayes, Hydeia	Hodges, Chandra	Hurtado, Celyn
Hall, Brenda	Hayes, Katherine	Hoefler, Jill	Hurtubise, Adam
Hall, Joy	Hayes, Lori	Hoel, Natalie	Hust, Sandra
Hall, Lee Anne	Hayes, Shelli	Hoffman, Tracie	Hutton, Roxanne
Hall, Marlene	Haynes, Hazel	Hogan, Sean	Huycke, Stephen
Hall, Nita	Heim, Jennifer	Hoke, Nancy	Hyde, Cheryl
Hall, Sunita	Henderson, Robin	Holbert, Alli	Hyde, Mary Beth
Hamilton, Yvonne	Henderson, Sherry	Holcomb, Karen	Hyde, Susan
Hamilton, Yvonne	Hendrix, Martha	Holder, Christina	Hyder, Debra
Hammond, Asceleta		Holiday, Vanessa	Iago, Catherine

continued on page 15

2022 FOUNDATION DONORS (CONTINUED)

Iannitelli, Anne	Johnson, Kathy	Kelleher, Linda	Koozer, Kandis
Ibarra, Angel	Johnson, Kimberly	Keller, Robin	Kopf, Catherine
Ilaria, Barbara	Johnson, Natasha	Kelley, Jody	Korinek, Rebecca
Intendencia, Gail	Johnson, Rosemary	Kelley, Susan	Korynecky, Hosanna
Irwin, Jessica	Johnson, Shanna	Kelly, Lynn	Kostyz, Erica
Isaac, Kinya	Johnson, Sharon	Kelly, Stephanie	Koudelka, Carrie
luele, Karen	Johnson, Sommar	Kemp, Catherine	Kovacevic, Alexander
Ivey, Angela	Johnson, Susan	Kemp, Colby	Kowal, Terri
Ivey, Debra	Johnson, Tarrah	Kendrick, Bonnie	Kowalke, Deborah
Ivey, Lisajo	Johnston, Denise	Kennedy, Mary	Koziol, Alicia
Jackson, Ashley	Johnston, Lisa	Kennedy, Natasha	Kozlowski, Shelley
Jackson, Brian	Joiner, Dorothy	Kenney, Amanda	Kraft, Renee
Jackson, Debora	Joiner, Dyane	Kent, Lisa	Kramer, LuAnn
Jackson, Elizabeth	Jolley, Michele	Kienast, Jennifer	Kramp, Mildred
Jackson, Emily	Jones, Brandi	Kiernan, Jennifer	Krantz, Sunni
Jackson, Mary	Jones, Dale	Kilkelly, Janet	Krause, Patricia
Jackson, Suzanne	Jones, Deanna	Kimbro, Linda	Krehbiel, Melissa
Jackson, Valerie	Jones, Donna	Kimrey, Sarah	Kriley, Susan
Jackson, Vickie	Jones, Gayle	Kindel, Mary	Kruml, Sandra
Jacobi, Yenise	Jones, Janet	King, Kristen	Krumpelman, Lindsay
Jacobs, Faye	Jones, Janice	Kingsley, Kimberly	Krusznis, Annemarie
Jacobs, Irene	Jones, Missy	Kingston, Renee	Kuhlemier, Shanna
James, Clay	Jones, Russell	Kirchoff, Raquel	Kunkel, Jaymie
James, Joanna	Jones, Sandra	Kirk, Yvonne	Kurtz, Lauran
James, Stephanie	Jones, Virginia	Kirkpatrick, James	Kuster, William
James, Treva	Jones, Wayne	Kitteringham, Kimberley	Kvamme, Daniel
Janssen, Christina	Jordan, Laura	Kjorsvik, Julie	Kvidera, Jason
Jantzen, Kendra	Jotz, Jeffrey	Klassen, Rachelle	Kwasniewski, Joanne
Jara, Megan	Joya, Angelina	Klein, Julie	La Plante, Diane
Jardee, Danielle	Juarez, Annette	Klein, Kristie	LaCaze, Emily
Jaster, Katie	Jurkovich, Bobbyjean	Klein, Sherry	Lacina, Bozena
Jeffrey, Shawn	Justice, Yolande	Kleinpeter, Rachel	LaCroix, Jodi
Jelks, Grace	Kaiser, Tabatha	Klekamp, Sherri	Lalonde, Melissa
Jenkins, Stephanie	Kalba, Patricia	Kleven, Christine	Lamar, Roseann
Jensen, Linda	Kalman, Clara	Kmet, Elizabeth	Lamberson, Sarah
Jensen, Sandra	Kapin, Kim	Knaus, Jodi	Lambert, Lisa
Jewett, Shandrella	Kasad, Vicki	Knight, Jaylene	Lambert, Roberta
Johnson, Angela	Kastens, Cyndra	Koch, Brenna	Lane, Kimberly
Johnson, Denise	Kathol, Lori	Koenig, Laura	Lane, Patricia
Johnson, Donna	Keeler, Samile	Koger, Jim	Langlely, Mary
Johnson, Geri	Keene, Kristie	Kohl, Michelle	Langowsky, Gina
Johnson, Jeannie	Keeney, Sandra	Kohler, Richard	Lanier, Debbie
Johnson, Jenifer	Keesling, Lana	Kohmetscher, Susan	Lanier, Joyce
Johnson, Katerri	Keezer, Heather	Kolacki, Maria	Lannon, Judith
Johnson, Kathy	Kehl, Nancy	Koller, Tammy	Lanter, Angela

continued on page 16



2022 FOUNDATION DONORS (CONTINUED)

Larsen, Jamie	Little, Pamela	Madron, Danielle	McClellan, Jeaniene
Larson, Patricia	Livingstone, Cynthia	Magee, Breyon	McClendon, Joann
Larter, Linda	Loar-Porter, Stacy	Maier, John Paul	McCloskey, Elaine
Latham, Gregory	Lockett, Patricia	Maldonado, Amelia	McColl, Barbara
Latimer, Brandye	Lockwood, Diane	Mallonee, Lucy	McCormick, Kimberly
Latshaw, Julie	Loeper, Brandi	Malmstrom, Amy	McCoy, Cecelia
Lauderdale, Tina	Logan, Sara	Malone, Dena	McCoy, Gloria
Lauther, Sharon	Lohn, Victor	Mangialmele, Marilou	McCoy, Richard
Lautzenheiser, Briana	Lomax, Amanda	Manousos, Katherine	McCray, Marlena
Law, Sara	Lomeli, Monique	Marafioti, Kristen	McCullough, Diane
Lawhon, Jacqueline	Longhurst, Lucia	Marble, Gina Rae	McCullough, Susan
Lawrence, Melissa	Looney, Emily	Mardini, Wendy	McDade, Valorie
Lawson, Melissa	Lopez Jordan, Lydia	Markham, Mary	McDaniel, Susan
Lawson, Sha'mecca	Lopez, Deborah	Marquez, Irene	McDonald, Melissa
Laymon, Teri	Lopez, Kenia	Marshall, Jessica	McDuffie, Betty
Layton, Kimberly	Lopez, Melissa	Marshburn, Rose	McElroy, Karolyn
Leavings, Rebecca	Lopez, Rose Marie	Martell, Marlen	McElyea, Lisa
Ledesma, Laurie	Lopez, Teresa	Martell, Wonder	McFadden, Sharon
LeDoux, Renee	Lor, Maiyee	Martin, Alicia	McGee, Rhea
Lee, Jennifer	Lorenc, Danielle	Martin, Carin	McGinnes, Millicent
Lee, Melony	Lorenz, Melissa	Martin, Carol	McGinnis, Angela
Lee, Shaunna	Lotrich, Kelly	Martin, Lisa	McGookey, Mary Beth
Lee, Taylor	Louia, Courtnie	Martin, Melissa	McGraw, Phyllis
Leger, Donna	Lovett, Robin	Martin, Tracy	McGrier, Kevin
Lehr, Andrew	Lovette, Kelly	Martin, Valerie	McInturf, Marty
Leissler, Kathryn	Lowery, Darsenika	Martinez, Lavoana	McIntyre, Teja
Lemoine, Marc	Lowery, Julie	Martinez-Bailey, Kari	McKay, Ann Marie
Lemons, Lori	Loye, Kristin	Mason, Kimberly	McKay, Janna
Leslie, Pam	Lucas, Lindsey	Mason, Sherry	McKay, Tami
Lesmeister, Lori	Lucier, Laurie	Masselink, Ashley	McKenzie, Deloris
Lester, Rieva	Lugo, Esterlina	Massey, Mark	McKinley, Sandra
LeViner, Janet	Lurker, Terilyn	Massey, Tamara	McKinney, Jodi
Lewallen, Katie	Lutz, Brittany	Masson, Sarah	McKinney, Sarah
Lewis, Ashley	Lutz, Sarah	Mastin, Thomas	McKivergan, Debra
Lewis, Peggy	Lyden-Giger, Erica	Mastroianni, Tina	McLaughlin, Kathy
Lewis, Tomika	Lynn, Teresa	Mathiesen, Amber	McLaughlin, Kevin
Limon, Michael	Lyon, Diane	Mathis, Karen	McLean, Tom
Linan, Catherine	Mabbutt, Dena	Matthews, Dorothy	McManus, Lanie
Lind, Sheila	Mabe, Ladeana	Matti, Melissa	McMaster, Constance
Lindsey, Steevie	MacDonald, Nicole	Mayes, Megan	McNeill, Debra
Lingo, Lynne	Macellaro, Kim	McAdams, Audrey	McNemee, Pamela
Link, Vivian	Mackie, Ann	McCaa, Dineki	McQuead, Lacey
Linnemeyer, Kathy	Macy, Brandon	McCarrell, Gale	McQueary, Jo
Lintner, Margaret	Madden, Marlene	McCarter, Darci	McQueen, Karen
Linville, Arianne	Madonna, Mary	McCarthy, Pamela	McVay, Heather

continued on page 17

2022 FOUNDATION DONORS (CONTINUED)

McVeigh, Antoinette	Montgomery, Teresa	Muscoreil, A. Diane	Odum, John
Meacham, Bonnie	Moon, Margaretta	Myers, Allison	Oelke, Melissa
Medeiros-Kowalczykowski, Rogeria	Moore, Andrea	Myers, Eddie	Oeser, Michelle
Medina, Madelene	Moore, Carol	Myers, Jennifer	Ogar, Dorothy
Medlen, Joanna	Moore, Carrie	Myers, Kadee	Okerman, Krista
Mejia, Anthony	Moore, Kathleen	Myers, Mary	Olivieri, Linda
Melone, Amanda	Moore, Melissa	Myers, Tiffany	Olson, Kristi
Melton, Judy	Moore, Peggy	Nanek, Jennifer	Olson, Tara
Menchaca, Clarissa	Moore, Sarah	Nanney, Nan	Onley, April
Mendenhall, Linda	Moore, Wesley	Napier, Leilani	O'rear, Bert
Mendoza, Kelly	Morales, Esli	Napoli, Leigh Ann	Orozco Nunez, Yolanda
Mendyk, Heidi	Moran, Vickie	Nash, Christine	Ortega, Niamh
Meneley, Bridget	Moreland, Janel	Nash, Susan	Ortiz, Kristina
Menth, Twyla	Morelos, Jessica	Nault, Donna	Ortiz, Norma
Mercer, Lori	Morency, Robin	Nejdl, Michelle	Ortiz, Shannon
Mercer, Tamara	Moreno, Tania	Nelson, Belinda	Ortiz, Susan
Merchant, Mary Ann	Morgan, Glenda	Nelson, Lindsay	Orton, Kevin
Meredith, Jodi	Morgan, Judy	Nemeroff, Linda	Osborne, Karen
Merideth, Rebecca	Morgan, Kristi	Neuenschwander, Rachel	Owen, Mallory
Messina, Donna	Morgan, Molly	Neufeld, Jan	Owens, Penny
Metzger, Stephanie	Morgan, Susan Marie	Neugent, Judith	Oyagak, Tonya
Michaelson, Garold	Morlan, Theresa	Newby, Tanya	Pablo, Joel
Michanowicz, Dawn	Morris, Heather	Newkirk, Kathleen	Pacheco, Roman
Millburn, Melinda	Morris, Jacklyn	Newman, Gregory	Packard, Amara
Miller, Cinderella	Morrison, Cynthia	Newsome, Nikima	Packer, Diane
Miller, Debbie	Morrison, Karen	Niblock, Lisa	Padovano, Jordan
Miller, Diane	Morrison, Melinda	Nichols, Erinn	Painter, Danielle
Miller, Kira	Morrow, Susan	Nicholson, Jacqueline	Palacios, Alicia
Miller, LaToya	Morse, Kelly	Nickson, Deborah	Palau, Liz
Miller, Laurie	Morse, Tammy	Nielsen, Kelley	Pallares, Yazmina
Miller, Naomi	Morton, Laura	Nienhouse, Vanessa	Palmer, Kathryn
Millsap, Andrea	Moskal, Allen	Niennstedt, Lori	Palmer, Michael
Millsbaugh, Angela	Mount-Taylor, Karen	Nieves, Brook	Palmer-House, Katie
Minami, Karen	Moyers, Linda	Niles, Jacqueline	Palsgaard, Abigail
Minch, Kendra	Mrnak, Lisa	Normand, Matthew	Palumbo, Joanna
Minchuk, Kathryn	Mueller, Sharon	North, Rhonda	Paolantonio, Mary Ann
Miner, Deborah	Mui, Crystal	Novak, Alisa	Parker, Diane
Minnis, Helen	Mull, Donna	Numainville, Mark	Parker, Irma
Mireles, Nadine	Mulner, Sheena	Nystrom, Nick	Parker, Kerri
Mitchell-Mcintosh, Laney	Muncey, Susan	O'Bannon, Melissa	Parker, Mary
Mitzimberg, Corey	Munoz, Lesley	Oberbroeckling, Heather	Parker, Michelle
Moles, Jaime	Murphy, Angela	Obroy, Susan	Parker, Robert
Montag, Angela	Murran, Kelly	O'Brien, Stephen	Parks, Victoria
Montgomery, Kimberly	Murray, Carla	O'Connell, Regina	Parlato, Carissa
	Murray, Claudine	O'Connell, Tiffany	Parnell, Tina



2022 FOUNDATION DONORS (CONTINUED)

Parra, April	Petroski, Kirk	Prado, Roseann	Rees, Michele
Parrish, Savannah	Pettas, Eleni	Preston, Connie	Reese, LaRette
Paschal, Renardo	Pettit, Jeanne	Price, Beth	Region IX
Paserchia, Francine	Pevey, Tami	Price, Judy	Reid, Miranda
Passey, Scott	Pfeifer, Melissa	Priest, Bear	Reinthaler, Charlotte
Patek, Kerry	Pflugfelder, Diane	Pucheu, Guy	Renn, Katherine
Patterson, David	Pfyl, Theresa	Punzo-Arias, Maria	Renteria, Jacqueline
Patterson, Pamela	Phillips Brown, Keisha	Pyles, Becky	Retana, Nicole
Patterson, Stephanie	Phillips, Catherine	Qualls, Jacob	Retzlaff, Courtney
Patterson, Susan	Phillips, Lori	Quast, Diana	Reyes, Angelina
Patton, Stacey	Phillips, Whitney	Quebedeaux, Dolores	Reyes, Vicki
Paul, Janelle	Philpot, Sonya	Queen, Kathy	Reymers, Suzanne
Paul-Lyle, Sandy	Picco, Ann	Quesnot, Michelle	Reynolds, Heather
Pavlica, Andrew	Pientka, Aimee	Quiceno, Yolanda	Reynolds, Sandy
Payne, Cathy	Pieper, Judy	Quinn, Kerry	Rich, Rose
Payne, Nkenga	Pierce, Sheri	Quinones, Shirley	Richards, Janusz
Payne, Sharon	Pierce, Susan	Quinonez, Maria	Richards, Sherry
Payton, Connie	Pierce, Tara	Quintana, Kendra	Richardson, April
Pearson, Casey	Pinski, Jennifer	Quintanilla, April	Richardson, James
Pearson, Debra	Pinsonault, Sandra	Raber, Melissa	Richmond, Lori
Peck, Sara	Pitt, Michelle	Racca-Sittre, Debbie	Richter, Kelly
Peddicord, Jennifer	Pittman, Janet	Racher, Terri	Rienschke, Janet
Pedersen, Diane	Piukana, Amy	Radford, April	Rife, Kathy
Pedroli, Lisa	Pizano, Andrea	Rae, Barbara	Riker, Joseph
Pegram, Alice	Plaizier, Annemarie	Raider, Ashley	Riley, Carolus
Pelich, Suzanne	Platz, Lindy	Raimo, Laura	Ripley, Pam
Pellin, Rhonda	Pock, Donna	Rakow, Jenny	Rivers, Lori
Peltoma, Tara	Pocklington, Stephanie	Ramirez, Alexis	Robb, Jay
Pemberton, Cindy	Poe, Carol	Ramirez, Norma	Robbins, Joanne
Pena, Maricela	Poe, Cynthia	Rand, Ashley	Robbins, Laurie
Pennington, Martha	Poe, Jaye	Randall, Jessica	Robbins, Penny
Pennise, Danielle	Politzer, Hannah	Raney, Teri	Robbins, Susan
Pepper, Gay Nell	Polk, Patty	Rangel, Janeth	Roberson, Joshua
Percifield, Rachael	Pollard, Jessica	Ransom, Allyson	Roberson, Mary
Perez, Patricia	Pollowy, Marcia	Ransom, Emery	Roberts, Amy
Perkins, Kay	Pomroy, Gail	Rapose, Sarah	Roberts, Amy
Perry, Dora	Pool, Abigail	Rasi, Brent	Roberts, Jason
Perry, Pamela	Porter, Lynn	Rausch, Steven	Roberts, Jordan
Peters, Milissa	Porter, Stephanie	Ravencroft, Kari	Robertson, Marcie
Peters, Sue	Potts, Alex	Rayford, Josh	Robinson, Bridgette
Petersen, Alyssa	Powell, Leona	Ready, Stacy	Robinson, Suzette
Petersen, Lisa	Powell, Michael	Reardon, Dianne	Robinson, Tiffany
Peterson, Marsha	Powell, Michelle	Reddick, Heather	Rodela Garces, Omega
Peterson, Sara	Powell, Millie	Reece, Carla	Rodriguez, Angel
Petronio, Sheri	Powers, Pamela	Reed, Shelly	Rodriguez, Maria

continued on page 19

2022 FOUNDATION DONORS (CONTINUED)

Rogers, Amber	Sanchez, Dana	Seader, Melissa	Sims, Tish
Rogers, Jodi	Sanchez, Sabdi	Seale, Jonathan	Simulcik Smith, Jessica
Rogers, Nikki	Sanchez, Sylvia	Seale, Thomas	Sittlow, Barry
Rogers, Penny	Sander, Carla	Seaton, Wendee	Sitz, Lisa
Rohner, Charity	Sanders, Carolyn	Seats, Courtney	Sjogren, Roxie
Rombouts, Marie	Sanders, Marilyn	Sedlak, Michael	Sloan, Tangee
Romero, Julie	Sanders, Melissa	See-Benes, Britt	Sloop, Ashleigh
Romine, Lori	Sanders, Monica	Selchan, Katherine	Slusser, Christina
Ronemus, Barbara Jo	Sandifer, Janet	Self, JL	Slusser, Rachel
Ronsse, Andrea	Sandorse, Karen	Selleck, Shawn	Small, Melissa
Roper, Loretta	Sandoval, Nanci	Sembach, Susan	Smith, Angela
Rosario, Evelyn	Sanky, Christine	Sessman, Kathleen	Smith, Camilla
Rosas-Mendoza, Leticia	Sapudar, Lauren	Setser, Sharon	Smith, Candace
Rose, Jessica	Saracino, Rose-Marie	Sewell, Elizabeth	Smith, Casandra
Rosebaugh, Jessica	Sathoff, Teri	Sewell, Lisa	Smith, Goldie
Rosenbaum, Kristen	Sattler, Peggy	Sexton, Michelle	Smith, Jane
Rosenfelt, Diane	Saucedo, Nora	Shackelford, Janice	Smith, Jennifer
Ross, Donald	Saurman, Jane	Shaffer, Pam	Smith, Judi
Ross, Leesa	Sauve, Tina	Shannon, Julia	Smith, Robyn
Roten, Sandra	Saxton, Laura	Sharke, Shayna	Smith, Ronnie
Roth, Debby	Schanze, Nancy	Sharp, Tabitha	Smith, Shannon
Rowland, Tiana	Scher McElhaney, Christi	Shatzkin, Laroue	Smith, Sheri
Rowton, Amanda	Schillaci, Gina	Shaw, Amanda	Smith, Sherry
Royal, Ashley	Schilling, Pamela	Shearer, Lynn	Smith, Wendy
Roybal, Samantha	Schimmel, William	Shearin, Tracy	Smitherman, Dawn
Rudnick, Maureen	Schisser, Jessica	Sheehan, Allison	Smock, Teri
Ruf, Kathy	Schlegel, Danette	Shinska, Marcella	Smythe, Annita
Rush, Sandy	Schmiderer, Thomas	Shipman, Karla	Smythe, Michelle
Russ, Dawn	Schmidt, Douglas	Shippey, Heather	Snow, Catherine
Russell, Dawn	Schmidt, Janine	Shocklee, Rachel	Snyder, Lisa
Russomanno, Cheryl	Schouten, Amy	Short, Mara	Society of Local Council Clerks
Ruth, Linda	Schouweiler, Crystal	Shuler, Rebecca	Solis, Yvette
Ryan, Kim	Schroeder, Kathryn	Shumpert, Pamela	Solko, Monica
Ryan, Marie	Schuh, Barbara	Sica, Laurie	Solomon, Elaine
Ryan, Sue	Schult, Shirley	Sifferlen, Patricia	Soncksen, Kamie
Ryks, Deborah	Schumacher, Chasity	Silva, Lillian	Sondov, Lori
Ryun, Ruth	Schwartz, Donna	Silva, Lindsey	Sortman, Donna
Sabbagh, Gwendolyn	Scime, Natalie	Simmons, Mona	Soto, Caroline
Sacco, Carol	Scofield, Melanie	Simmons, Sherry	Sousa, April
Sadeli, Angela	Scollick, Phillip	Simon, Michelle	Southard, Shawne
Sain, Emily	Scott, DeShawn	Simon, Sarah	Sovey-Meyer, Denise
Salazar, Andrea	Scott, Jennifer	Simons, Tracy	Sowa, Zoe
Salazar, Bernadette	Scott, Lisa	Simonsen, Arne	Sparks, Laurie
Salwan, Neetu	Scott, Malisa	Simpson, James	Spaulding, Lorraine
Sampson, Laurie	Scott, Rosezea	Simpson, Lillian	

continued on page 20



2022 FOUNDATION DONORS (CONTINUED)

Spears, Harley Ashlin	Stutz, Kathleen	Thomas, J Gregory	Tucker, Gloria
Spears, Penny	Suciu, Barbara	Thomas, Lucinda	Tucker, Karen
Spelorzi, Carmen	Suhr, Joan	Thomas, Raye Ellen	Turner, Marie
Speroni, Sandra	Sullivan, Robin	Thomason, Belinda	Turner, Rebekah
Spiek, Kathleen	Sullivan, Tracy	Thompson, Aisha	Twedt, Doris
Spiller, Hope	Sunseri, Marie	Thompson, Jennifer	Uhrinak, Susan
Spivey, Daralyn	Sutton, Ann	Thompson, Jennifer	Ullery, Susan
Sponsler, Heather	Swann, Barbara	Thompson, Marie	Underwood, Janelle
Sprabery, Tami	Swanson, Kathleen	Thompson, Priscilla	Vachon, Diana
Spring, Michele	Swanson, Kimberly	Thompson, Vernice	Valdez, Mary Jo
Squarcia, Kirsten	Swanson, Tamra	Thone, Sandie	Valenzuela, Mary
Stafford, Melinda	Sweeting, Karen	Thorngren, Amy	Valladares, Ela
Stamps, Alicia	Swope, Chris	Thornton, Connie	Van Camp, Toni
Starnes, Michelle	Symko, Emily	Tibbetts, Sherry	Van Clake, Barbara
Stately, Jeri	Symonds, Kellie	Tillman, Bryan	Van Donsel, Alane
Stayton, Megan	Tabor, Tammy	Tilton, Joann	Van Ham, Kerry
Steadman, Leanne	Tackett, Margo	Tisdall, Tammy	VanBlargan, Clara
Stechschulte, John	Tanguay, Deb	Toberman, Kimberly	VanBuskirk, Patricia
Steckel, Liz	Tanner, Lenna	Tokar, Denise	Vance, Unita
Stenson, Melissa	Tarpley, Allison	Tomasik, Katherine	VanErman, Darcy
Stephan, Leslie	Tarro, Janet	Tomicich, Michael	Vann, Tameeka
Stephens, Jodi	Taul, Kristie	Tommer, Melody	Vargas, Stephanie
Stephens, Katelyn	Taylor, Bobbie Jo	Tompkins, Cindy	Vasquez, Maria
Stephenson, Erica	Taylor, Brianna	Tompkins, Rebecca	Vazquez, Geyzza
Stevens, Juliann	Taylor, Debbie	Toney-Cowart, Shannon	Veeder, Marjorie
Stevens, Paige	Taylor, Holly	Torraville, Aleen	Velasquez, Martha
Stevens, Tracey	Taylor, Jackie	Torres, Carol	Velez, Fabian
Stewart, Christina	Taylor, Kathryn	Torres, Priscilla	Ventola, Tara
Stewart, James	Taylor, Loretta	Torrez, Irma	Ventura, Karen
Stewart, Victoria	Taylor, Mackenzie	Touchstone, Jo Ann	Ventura, Raquel
Stidham, Michelle	Taylor, Tammy	Touro, Keri	Vezzose, Tammy
Stingley, Victoria	Taylor, Wanda	Townsend, Patrick	Vieira, Jacqueline
Stoddard, Erica	Taylor-Ferrell, Sara	Towslee, Molly	Vinzant, Lori
Stoncius, April	Tedesco, Eileen	Trachsler, Leslie	Vonachen, Kathryn
Stone, Lori	Tellier, Becky	Tracy, Tammy	Vorwald, Cindy
Stradt, Melissa	Terrell, Rebecca	Tran, Elaine	Wach, Melissa
Strange, Brandi	Tew, Mary	Trantham, Sharion	Wade, Angie
Straub, Barb	Tezak, Betty	Tremel, Fleur	Wade, Jodiann
Streeter, Jasmine	Thacker, Stacy	Trickey, April	Wagner, BessieJo
Strickland, Donna	Thatcher, Roxanne	Trimble, Claire	Wagner, Clifford
Strickland, Sandra	Theurer, Heidi	Trimble, Kristie	Wagoner, Elizabeth
Stubbe, Morgan	Thibodeau, Meghan	Tripp, Charmaine	Wagoner, Vicki
Stuckey, Adrienne	Thiner, Angela	Troyan, Linda	Waibel, Gail
Sturman, Amy	Thomas, Barbara	Trujillo, Erika	Wainscott, Carla
Stutts, Angela	Thomas, Connie	Tucker, Cynthia	Wakefield, Ciara

continued on page 21

2022 FOUNDATION DONORS (CONTINUED)

Walden, Mabel	Wessels, Robyn	Williams, Sharon	Yates, Sandy
Walker, Cheryl	West Hay, Colleen	Williams, Sharon	York, Ronda
Walker, Kathy	West, Jennifer	Williams, Sheila	York, Tayler
Walker, Liza	West, Tonya	Williams, Susan	Yoshida, Brandon
Walker, Pam	Westbrook, Madeline	Williams, Tammy	Young, Katie
Walker, Rebecca	Westbrook, Sherri	Williams, Tammy	Young, Stephanie
Walker, Shauyn	Westbrooks, Jackie	Williams-Hinton, Laura	Yount, Robin
Walker, Terry	Whaley, Andina	Williford, Teresa	Yuknavage, Marcy
Wallace, Lynette	Whaley, Jane	Wilson, Joyce	Zamora, Crystal
Wallen, Holly	Wheeler, Connie	Wilson, Kerri	Zavala, Sandra
Walsh, Nanci	Wheeler, Jennifer	Wilson, Matthew	Zeidler, Amanda
Walters Raisor, Laurie	Whitaker, Teresa	Wilson, Melissa	Zeledon, Leslie
Walters, Kelly	White, Chris	Wilson, Shacresha	Zermeno, Rachel
Waltman, Gloria	White, Christy	Wilson, Sterling	Zimmer, Angela
Walton, Doris	White, Emma	Wilson, Teisha	Zoklu, Sercan
Waranowicz, Nicole	White, Jean	Windham, Mary Jo	Zollinger, Courtney
Ward DeGarmo, Khianna	White, Joy	Wingerter, Ann	Zortz, Amy
Ward, Eddie	White, Katrina	Winkle, Angela	Zubaty, Jessica
Ward, Valerie	White, Kelly	Winn, Sara	Zumini, James
Warfield, Amy	White, Linda	Winter, Chelaine	Zweizig, Nathan
Warne, Bonnie	White, Renee	Wisconsin Clerks/ Tres & FOA	
Warner, Gwen	White, Rosaleta	Withers, Wendy	
Warner, Tijauna	White, S. Diane	Wolf, Brenda	
Warren, Rosyl	Whitehead, Khira	Wolfe, Lisa	
Waszak, Susan	Whitehead, Shirley	Womack, Antoinette	
Waters, Pamela	Whitehead, Terry	Wonsor, Lucrecia	
Watkins-Eldridge, Regina	Whitt, Elizabeth	Wood, Karen	
Watson, Angela	Whittington, Jane	Wood, Shannon	
Watson, Kathi	Wicks, Amelia	Woodard, Niki	
Watson, Stephanie	Widlacki, Nancy	Woods, Christina	
Wayman, Cynthia	Wiginton, Kay	Woods, Jennifer	
Weary, Debra	Wikert, Donna	Wordell, Carol	
Webb, Jessie	Wilbert, Pamela	Worley, Kim	
Webb, Vonda	Wilcox, Austen	Worsham, Glenda	
Weber, Claudia	Wilcox, Patricia	Worthey Johnson, Kimberly	
Weber, Marie	Wilder, Teresa	Worthing, Sheryl	
Webster, Robin	Wiley, Jakob	Wright, Alaina	
Webster, Suzanne	Williams, Brenda	Wright, Candace	
Wedel, Sherri	Williams, Cecilia	Wright, Latricia	
Weisiger, Lara	Williams, Delores	Wright, Scakajawea	
Welborn, Christy	Williams, Judy	Wyles, Norma	
Welfl, Kathy	Williams, Kandi	Yang, Adam	
Wells, Graham	Williams, Kaneilia	Yasuda, Erica	
Wells, Karma	Williams, Lori		
Welsh, Suzanne	Williams, Melissa		



IIMC FOUNDATION MEMORIALS

The following is a list of donations made to the IIMC Foundation on behalf of the deceased individuals.

On behalf of Bonnie Lehner

Mary Lynne Stratta

On behalf of Paul Craig

Vincent Buttiglieri

Sharon Cassler

Brenda Cirtin

Tracy Davis

Shari Moore

Colleen Nicol

Roxanne Schneider

Pamela Smith

Mary Lynne Stratta

Charles Tokar

On behalf of Flynn Adcock

Mary Lynne Stratta

On behalf of Gary Scott Nelson

Mary Lynne Stratta

On behalf of Helen Kawagoe

Caroline De Llamas

On behalf of Joel Valdez

Mary Lynne Stratta

On behalf of Kenny Mallard

Mary Lynne Stratta

On behalf of Larry Lorenzen

Dale Bartsow

Buster Brown

Vincent Buttiglieri

Sharon Cassler

Tracy Davis

Kathryn Dornan

Bev Hammerstrom

Mary Ann Hess

IIMC

Cristina LoVerde

Shari Moore

Colleen Nicol

Pamela Smith

Mary Lynne Stratta

Stephen Wolf

On behalf of Lenny Verraastro

Sharon Cassler

Brenda Cirtin

Mary Johnston

Mary Lynne Stratta

On behalf of Mark Monesmith

Mary Lynne Stratta

On behalf of Mary Lou Todd

IIMC

On behalf of Molly Kapeluck

Carla Abel

Sharon Cassler

Mary Johnston

On behalf of Paul Pingleton

Vincent Buttiglieri

Sharon Cassler

Tracy Davis

Kathryn Dornan

Mary Ann Hess

Shari Moore

Colleen Nicol

Roxanne Schneider

Pamela Smith

Mary Lynne Stratta

On behalf of Peggy Barnes Bass

Buster Brown

Vincent Buttiglieri

Sharon Cassler

Tracy Davis

Shari Moore

Colleen Nicol

Roxanne Schneider

Mary Lynne Stratta

On behalf of Theresa Stratta Dabbs

Mary Lynne Stratta

On behalf of Tobey Smith

Mary Lynne Stratta

On behalf of Wayne Hussey

Vincent Buttiglieri

Tracy Davis

Bev Hammerstrom

Shari Moore

Colleen Nicol

Robert Pritchard

Roxanne Schneider

Mary Lynne Stratta

On behalf of Lawrence Paul Miel

IIMC

On behalf of Virginia Hernandez

IIMC